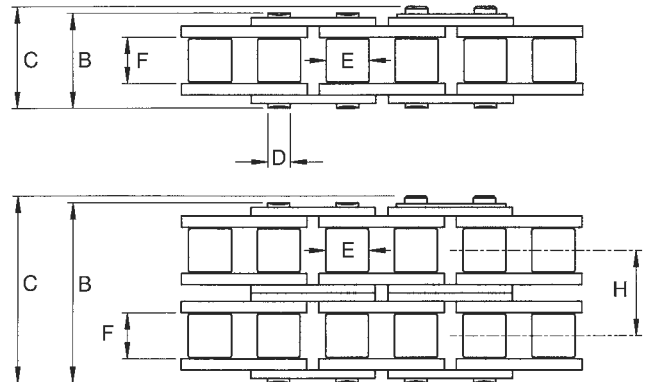
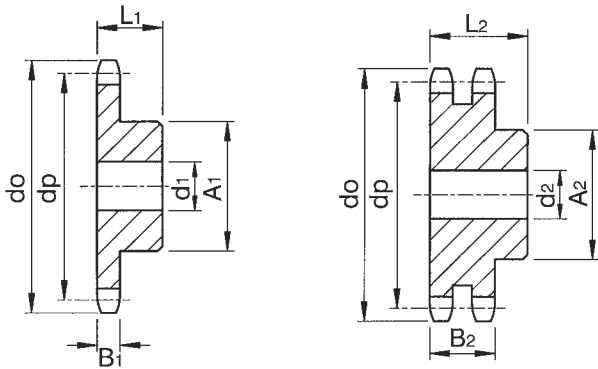


# Standard Sprockets for 8mm Pitch British Standard Chain Type 05B

Conforming to ISO Std 606



## Simplex Sprockets

Chain No. 05B1-1

Pitch 8.0mm

E Roller Diameter 5.0mm

F Inside Width 3.0mm

B<sub>1</sub> Tooth Width 2.8mm

## Duplex Sprockets

Chain No. 05B-2

Pitch 8.0mm

E Roller Diameter 5.0mm

F Inside Width 3.0mm

B<sub>2</sub> Tooth Width 8.3mm

## Chain Specifications

Chain No.	Simplex 05B-1	Duplex 05B-2
Plate Depth	7.1	7.1
B Pin Length	8.6	14.3
C Overall Width	11.7	17.4
D Pin Diameter	2.31	2.31
Tensile Strength N	4600	7500
Weight per metre kg	0.18	0.36

No. Teeth Z	Pitch Circle Ø dp	Outside Ø do	Simplex Sprocket						Duplex Sprocket					
			Cat. No.	Min. † Bore d <sub>1</sub>	Max. Bore	L.T.B. L <sub>1</sub>	Hub Ø A <sub>1</sub>	App. Weight kg	Cat. No.	Min. † Bore d <sub>2</sub>	Max. Bore	L.T.B. L <sub>2</sub>	Hub Ø A <sub>2</sub>	App. Weight kg
<b>Steel Pinions</b>														
8	20.90	24.0	05B1-08	6	8	12	13	0.013	05B2-08	8	8	18	12	0.015
9	23.39	26.6	05B1-09	6	10	12	15	0.018	05B2-09	8	10	18	15	0.024
10	25.89	29.2	05B1-10	8	11	12	17	0.021	05B2-10	10	11	18	17	0.029
11	28.39	31.7	05B1-11	8	12	13	18	0.027	05B2-11	10	12	18	19	0.039
12	30.91	34.0	05B1-12	8	13	13	20	0.034	05B2-12	10	13	18	21	0.049
13	33.42	36.7	05B1-13	8	14	13	23	0.045	05B2-13	10	15	18	24	0.065
14	35.95	39.2	05B1-14	8	16	13	25	0.053	05B2-14	10	17	18	26	0.079
15	38.48	41.7	05B1-15	8	19	13	28	0.066	05B2-15	10	20	18	29	0.097
16	41.01	44.3	05B1-16	8	20	14	30	0.082	05B2-16	10	21	20	32	0.128
17	43.53	46.8	05B1-17	8	20	14	30	0.086	05B2-17	10	23	20	34	0.147
18	46.07	49.3	05B1-18	8	20	14	30	0.089	05B2-18	10	25	20	37	0.173
19	48.61	51.9	05B1-19	8	20	14	30	0.093	05B2-19	10	26	20	39	0.195
20	51.14	54.4	05B1-20	8	20	14	30	0.097	05B2-20	10	27	20	40	0.212
21	53.68	57.0	05B1-21	8	24	14	35	0.124	05B2-21	10	27	20	40	0.225
22	56.21	59.5	05B1-22	8	24	14	35	0.129	05B2-22	10	27	20	40	0.237
23	58.75	62.0	05B1-23	8	24	14	35	0.134	05B2-23	10	27	20	40	0.251
24	61.29	64.6	05B1-24	8	24	14	35	0.139	05B2-24	10	27	20	40	0.265
25	63.83	67.5	05B1-25	8	24	14	35	0.145	05B2-25	10	27	20	40	0.282
26	66.37	69.5	05B1-26	10	27	16	40	0.190	05B2-26	12	34	22	50	0.384
27	68.91	72.2	05B1-27	10	27	16	40	0.196	05B2-27	12	34	22	50	0.401
28	71.45	74.8	05B1-28	10	27	16	40	0.202	05B2-28	12	34	22	50	0.418
29	73.99	77.3	05B1-29	10	27	16	40	0.208	05B2-29	12	34	22	50	0.435
30	76.54	79.8	05B1-30	10	27	16	40	0.215	05B2-30	12	34	22	50	0.453
31	79.08	82.4	05B1-31	10	27	16	40	0.222	05B2-31	12	40	22	60	0.565
32	81.62	84.9	05B1-32	10	27	16	40	0.228	05B2-32	12	40	22	60	0.585
33	84.16	87.5	05B1-33	10	27	16	40	0.235	05B2-33	12	40	22	60	0.605
34	86.70	90.0	05B1-34	10	27	16	40	0.243	05B2-34	12	40	22	60	0.625
35	89.25	92.5	05B1-35	10	27	16	40	0.250	05B2-35	12	40	22	60	0.647
36	91.79	95.0	05B1-36	10	27	16	40	0.258	05B2-36	12	40	22	60	0.668
37	94.33	97.6	05B1-37	10	27	16	40	0.266	05B2-37	12	40	22	60	0.691
38	96.88	100.2	05B1-38	10	27	16	40	0.274	05B2-38	12	40	22	60	0.715
39	99.42	102.7	05B1-39	10	27	16	40	0.282	05B2-39	12	40	22	60	0.739
40	101.97	105.2	05B1-40	10	27	16	40	0.291	05B2-40	12	40	22	60	0.763
45	114.69	118.0	05B1-45	12	40	20	60	0.581						
48	122.32	125.6	05B1-48	12	42	20	62	0.637						
50	127.41	130.7	05B1-50	12	42	20	*62	0.659						
57	145.22	148.6	05B1-57	14	52	20	*80	1.006						
60	152.86	156.2	05B1-60	16	52	34	*80	1.568						
76	193.59	197.7	05B1-76	20	52	34	*80	1.783						

All dimensions in mm. † Min. tolerance bore which can be machined in sprocket. \*Sprockets with an asterisk on hub Ø may be of fabricated construction.

Material: -Steel Pinions 8 to 45 tooth minimum U.T.S. 600N/mm<sup>2</sup> - Above 45T - 410N/mm<sup>2</sup>

## Finished Bored and Keyed Sprockets

All standard plain bore sprockets can be supplied finish bored, with keyway and setscrews, all to customer specification. Where possible standard bores and keyways should always be used (refer to sizes shown on page 83). For idler applications sprockets can be supplied fitted with phosphor bronze bushes, or sintered bushes, with bores up to the maximum indicated for sprocket bore. All modifications are offered on our 48 hour rework service. Pinions with material to 600 N/mm<sup>2</sup> can have teeth induction hardened to 45Rc.