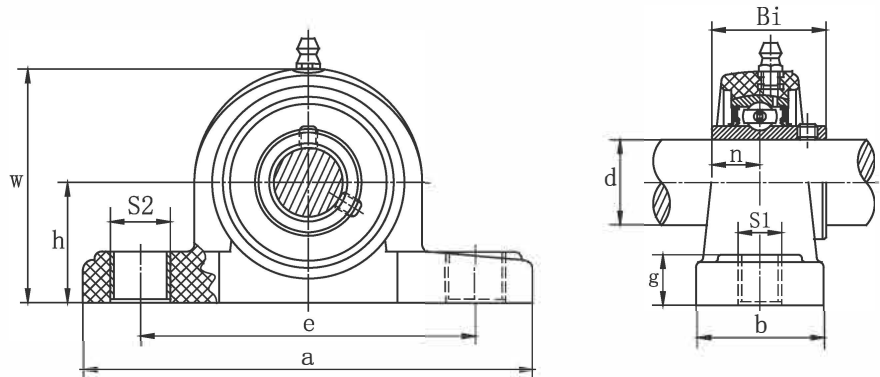


Thermoplastic Housing

UCPPL 200

- Material: PBT
- Solid base
- Stainless steel grease nipples as standard (suffix N)



Bearing unit	Shaft Dia.	Dimensions(in)or(mm)										Bolt used	Torque	Bearing	Housing	Housing
No.	d	h	a	e	b	g	S1	S2	W	Bi	n	(in.)	(N.m)	No.	No.	Weight
	(in.)	(mm)			(mm)			(mm)			(mm)	(in.)				(kg)
UCPPL 201	12													SUC 201		
201-8	1/2													201-8		
UCPPL 202-9	9/16													SUC 202-9		
202	15	1 5/16	5	3 47/64	1 1/2	9/16	7/16	35/64	2 37/64	1.2205	0.5000	M10	3/8	18	202	PPL 203 0.12
202-10	5/8	33.3	127	95	38	14.2	11	14	65.5	31.0	12.7			202-10		
UCPPL 203	17													SUC 203		
203-11	1 1/16													203-11		
UCPPL 204-12	3/4													SUC 204-12		
204	20	33.3	127	95	38	14.2	11	14	65.5	31.0	12.7	M10	3/8	18	204	PPL 204 0.12
UCPPL 205-14	7/8													SUC 205-14		
205-15	15/16													205-15		
205	25	36.5	140.5	105	38	14.5	11	14	71	34.0	14.3	M10	3/8	25	205	PPL 205 0.14
205-16	1													205-16		
UCPPL 206-17	1 1/16													SUC 206-17		
206-18	1 1/8													206-18		
206	30	1 11/16	6 27/64	4 11/16	1 13/16	45/64	35/64	45/64	3 5/16	1.5000	0.6260	M12	7/16	30	206	PPL 206 0.20
206-19	1 3/16	42.9	163	119	46	17.8	14	18	84	38.1	15.9			206-19		
206-20	1 1/4													206-20		
UCPPL 207-20	1 1/4													SUC 207-20		
207-21	1 5/16													207-21		
207-22	1 3/8													207-22		
207	35	47.6	168	127	48	18	14	18	94.5	42.9	17.5	M12	7/16	35	207-22	PPL 207 0.25
207-23	1 7/16													207-23		
UCPPL 208-24	1 1/2													SUC 208-24		
208-25	1 9/16													208-25		
208	40	49.2	184	137	54	19.5	14	18	99	49.2	19.0	M12	7/16	45	208-25	PPL 208 0.35
UCPPL 209-26	1 5/8													SUC 209-26		
209-27	1 11/16													209-27		
209-28	1 3/4													209-28		
209	45	54	192	146	54	23	17	20	106	49.2	19.0	M16	5/8	50	209-28	PPL 209 0.45
UCPPL 210-30	1 7/8													SUC 210-30		
210-31	1 5/8													210-31		
210	50	57.2	206	159	60	23	17	20	114	51.6	19.0	M16	5/8	55	210-31	PPL 210 0.55