



MOTOR DATA SHEET

MOTOR PART CODE:

11.023TECCB5-IE2

FRAME SIZE:

160M1-2

	50Hz
Output (kW)	11
Rotation Speed (rpm)	2930
Voltage	400/690
Full Load Current (A)	19.73/11.39
Full Load Torque (Nm)	35.85

	60Hz
Output (kW)	13.2
Rotation Speed (rpm)	3516
Voltage	480/828
Full Load Current (A)	19.73/11.39
Full Load Torque (Nm)	29.88

Efficiency Data

100%	75%	50%
89.4	89.5	89

Factory Reference	T2C 160M1-2
Tst/Tn (times)	2.5
Tmax/Tn	2.8
Noise (dB)	86
Moment of inertia	0.04561
Type of feet	Not fitted
Protection	IP55
Rotation Direction	F / R
Cable Glands	2 - M32× 1.5
Paint Colour	RAL 7024
Efficiency	IE2
Bearing (DE)	6309 C3

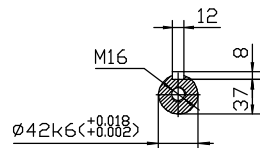
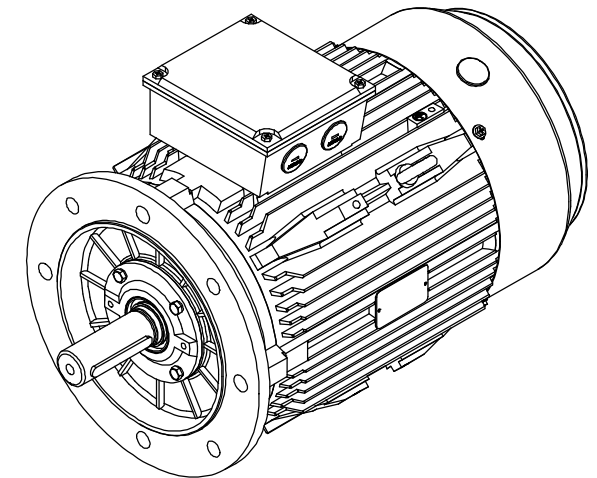
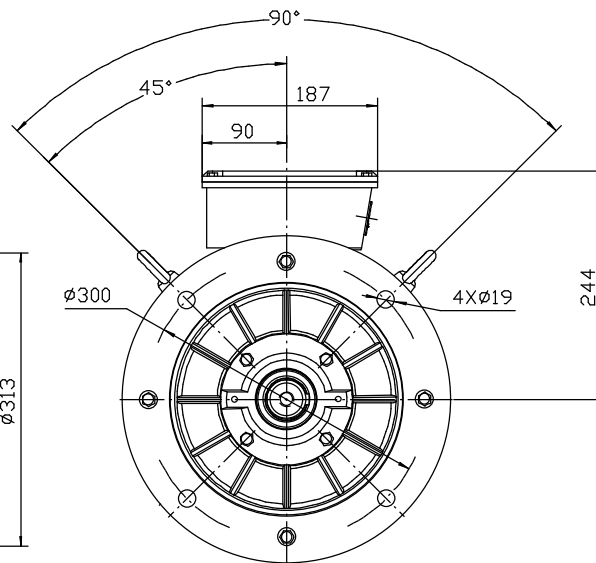
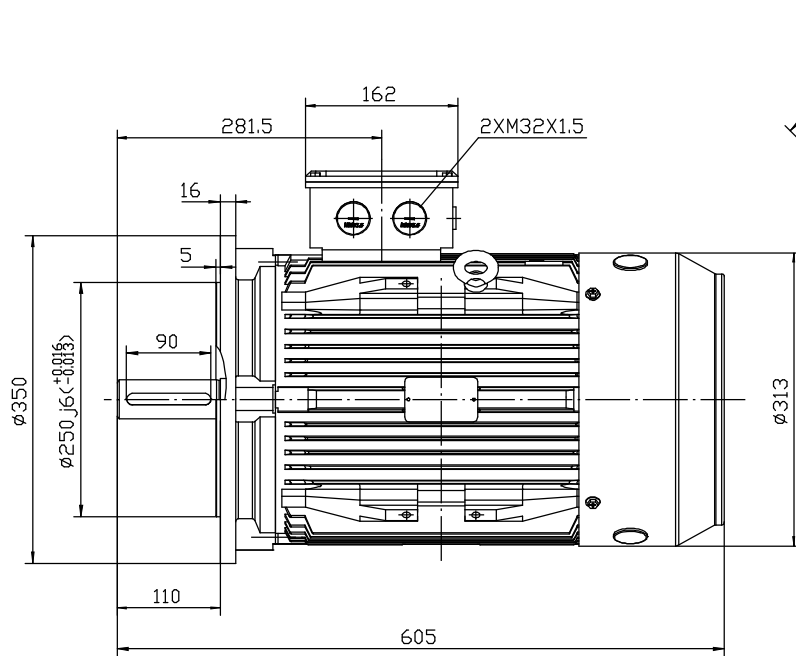
Power Factor (cos)	0.9
Tmin/Tn	1.4
Ist/In (Times)	8.5
Net Weight (Kg)	113
Housing material	Cast Iron
Insulation Class	F
Thermal Protection	PTC 140°C
Duty Cycle	S1
Cooling	IC 411
Ambient Temperature	-20°C to +40°C
Bearing Brand	NSK
Bearing (NDE)	6309 C3

Motors designed and manufactured in accordance with:


**IEC 60034
IEC 60038
IEC 60072
2014/30/EU (EMC)
2014/35/EU (LVD)
2011/65/EU (RoHS 2)**

www.tecmotors.co.uk

TEC Electric Motors Ltd. reserves the right to amend or change motor designs or data sheet information



TC 160M B5

Drawn By	Date	TC 160 B5
A442313	27/11/2017	
Approved by	Date	 www.tecmotors.co.uk
L. Overton	27/11/2017	
Issue No =	Date	
BM01/A001	27/11/2017	