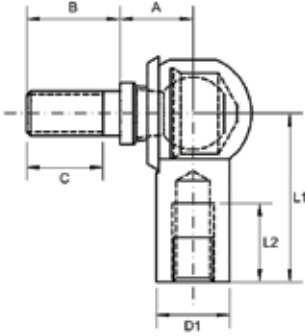




BALL JOINTS



A SERIES: AMG - AIG

Description:

A-Series is our 4-piece standard range of nylon lined ball joints suitable for light to medium industrial/mechanical load applications requiring smooth action and good wear resistance. Available in both metric and imperial thread sizes. A-Series ball joints are also available without the ball stud allowing for assembly on to a pre-positioned stud. Please refer to compatible ball stud options in our miscellaneous product section. Neoprene gaiter helps resist dirt contamination, if gaiter is not required, please remove the letter G from the part number.

Material Specifications:

Body: Steel 230M07PB zinc plated and clear trivalent passivate.
 Ball stud: Steel 230M07PB zinc plated and clear trivalent passivate.
 Liner: Nylon 6 white. 300L Stainless Steel. Gaiter: Neoprene.

Features

- Metric & imperial thread sizes
- Ultra smooth action
- Can be assembled in situ
- Good wear resistance
- Lubricated

Possible Applications

- Industrial equipment
- Construction equipment
- Agricultural equipment
- Lawn & garden equipment

Temperature Range

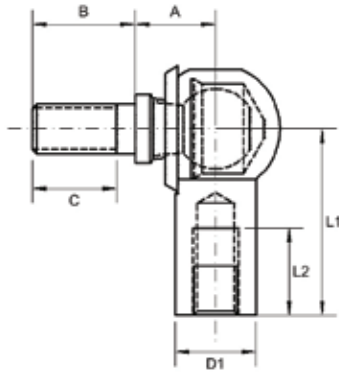
-30°C to +120°C

Specification

ELV & RoHS compliant



AMG SERIES: LINER RETAINED BALL JOINTS (METRIC)

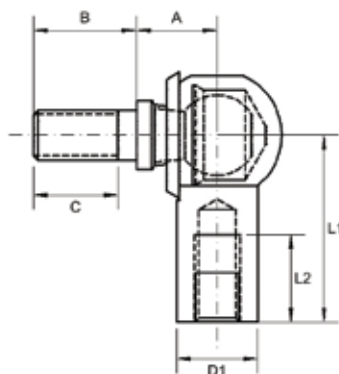


- Body:** Steel 230M07Pb, Zinc Plated and Clear Trivalent Passivate OR Zinc Plated and Yellow Hexavalent Passivate
- Liner:** Nylon 6
- Ball Stud:** Steel 230M07Pb, Zinc Plated and Clear Trivalent Passivate
- Dust Seal:** Neoprene Rubber
- Specification:** ELV and RoHS Compliant



Part No. Right Hand	Part No. Left Hand	Body Thread	Stud Thread	Ball Dia	L1	L2 Min	Stud A/F	A	B	C Min	D1
AMG6	AMG6LH	M6X1.00	M6X1.00	10	25.0	11.5	8	11.0	12.5	10.0	10
AMG6/2	AMG6/LH	M6X1.00	M8X1.25	10	25.0	11.5	8	11.0	12.5	10.0	10
AMG8	AMG8LH	M8X1.25	M8X1.25	13	30.0	14.0	11	13.0	16.5	13.5	13
AMG8/1	AMG8/1LH	M8X1.25	M8X1.25	13	41.0	25.0	11	13.0	16.5	13.5	13
AMG8/6	AMG8/6LH	M8X1.25	M8X1.25	13	41.0	25.0	11	13.0	20.0	13.5	13
AMG8/7	AMG8/7LH	M8X1.25	M8X1.25	13	30.0	14.0	11	13.0	20.0	17.5	13
AMG8/8	AMG8/8LH	M6X1.00	M8X1.25	13	30.0	14.0	11	13.0	16.5	13.5	13
AMG8/10	AMG8/10LH	M8X1.25	M8X1.25	13	30.0	14.0	11	13.0	18.5	15.5	13
AMG8/11	AMG8/11LH	M6X1.00	M8X1.25	13	51.0	25.0	11	13.0	16.5	13.5	13
AMG8/13	AMG8/13LH	M10X1.50	M8X1.25	13	30.0	15.0	11	13.0	16.5	13.5	13
AMG8/14	AMG8/14LH	M8X1.00	M8X1.25	13	25.0	12.0	11	13.0	16.5	13.5	13
AMG10	AMG10LH	M10X1.50	M10X1.50	16	35.0	15.5	13	16.0	20.0	15.0	16
AMG10/1	AMG10/1LH	M12X1.75	M10X1.50	16	45.0	25.5	13	16.0	20.0	15.0	16
AMG10/2	AMG10/2LH	M6X1.00	M10X1.50	16	30.0	10.5	13	14.5	19.0	11.1	16
AMG10/3	AMG10/3LH	M10X1.50	M10X1.50	16	35.0	15.5	13	16.0	25.0	20.0	16
AMG10/5	AMG10/5LH	M10X1.50	M10X1.50	16	35.0	15.5	13	16.0	20.0	15.0	16
AMG12	AMG12LH	M12X1.75	M12X1.75	16	45.0	25.5	13	16.0	20.0	17.0	16
AMG12/1	AMG12/1LH	M16X2.00	M12X1.75	16	45.0	30.0	13	16.0	20.0	17.0	16

AIG SERIES: LINER RETAINED BALL JOINTS (IMPERIAL)



- Body:** Steel 230M07Pb, Zinc Plated and Clear Trivalent Passivate OR Zinc Plated and Yellow Hexavalent Passivate
- Liner:** Nylon 6
- Ball Stud:** Steel 230M07Pb, Zinc Plated and Clear Trivalent Passivate
- Dust Seal:** Neoprene Rubber
- Specification:** ELV and RoHS Compliant



Part No. Right Hand	Part No. Left Hand	Body Thread	Stud Thread	Ball Dia	L1	L2 Min	Stud A/F	A	B	C Min	D1
AIG312	AIG312LH	5/16 UNF	5/16 UNF	0.512	1.181	0.555	0.433	0.512	0.650	0.512	0.512
AIG312/1	AIG312/1LH	5/16 UNF	5/16 UNF	0.512	1.181	0.555	0.433	0.512	0.827	0.750	0.512

For stainless steel add 'SS' to part no. For example 'AMG6 SS'