



BALL JOINTS



F SERIES: FMG - FIG

Description:

F-Series is our 4-piece range of spring retained ball joints suitable for medium industrial/mechanical load applications. Available in both metric and imperial thread sizes. F-Series ball joints are ideal for severe wear conditions and are resistant to vibration and high shock loading. Neoprene gaiter helps resist dirt contamination. If gaiter is not required please remove the letter G from the part number.

Material Specifications:

Body: Steel 230M07PB ferritic nitrocarburised and zinc plated and clear trivalent passivate. Ball stud: Steel 230M07PB ferritic nitrocarburised and zinc plated and clear trivalent passivate. Inner ring: Hardened and tempered spring steel to BS5216. Gaiter: Neoprene.

Features

Metric & imperial thread sizes
 High pull out load
 High wear conditions
 High shock loads
 Resistant to vibration
 Lubricated

Possible Applications

Industrial equipment
 Construction equipment
 Agricultural equipment
 Lawn & garden equipment

Temperature Range

-30°C to +120°C

Specification

ELV & RoHS compliant

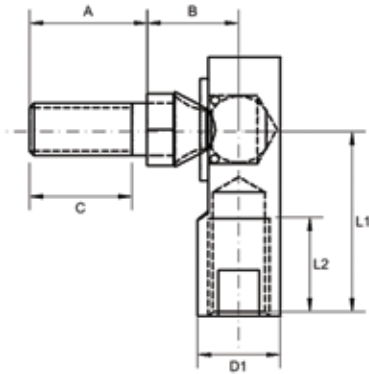
Interchange table

Dunlop	Tuthill	THK	Alinabal	SKF	Asahi	Rose
FMG (metric)	SRG-M	-	-	-	-	-
FIG (imperial)	SRG	-	-	-	-	-

Note: Manufacturers part numbers are used for descriptive purposes only and may not be direct equivalent products.



FMG SERIES: SPRING RETAINED BALL JOINTS (METRIC)



Body: Steel 230M07Pb, Zinc Plated and Clear Trivalent Passivate

Ball Stud: Steel 230M07Pb, Hardened, Zinc Plated and Clear Trivalent Passivate

Dust Seal: Neoprene Rubber

Spring: Spring Steel

Specification: ELV and RoHS Compliant



Part No. Right Hand	Part No. Left Hand	Body Thread	Stud Thread	Ball Dia	L1	L2 Min	Stud A/F	A	B	C Min	D1
FMG5	FMG5LH	M5X0.80	M5X0.80	7.75	24.6	12.7	10.00	14.30	11.90	12.0	11.11
FMG6	FMG6LH	M6X1.00	M6X1.00	7.75	24.6	12.7	10.00	14.30	11.90	12.0	11.11
FMG6/1	FMG6/1LH	M6X1.00	M6X1.00	7.75	19.2	7.3	10.00	14.30	11.90	12.0	11.11
FMG8	FMG8LH	M8X1.25	M8X1.25	8.74	28.4	14.2	13.00	17.45	13.50	15.0	12.70
FMG8/1	FMG8/1LH	M8X1.25	M8X1.25	8.74	41.0	25.0	13.00	17.45	13.50	15.0	12.70
FMG8/2	FMG8/2LH	M8X1.25	M8X1.25	8.74	28.4	14.2	13.00	11.50	13.50	9.0	12.70
FMG8/3	FMG8/3LH	M8X1.25	M6X1.00	8.74	28.4	14.2	10.00	12.70	13.50	10.0	12.70
FMG10	FMG10LH	M10X1.50	M10X1.50	10.59	35.0	19.0	13.00	22.23	17.45	20.0	15.88
FMG10/1	FMG10/1LH	M8X1.25	M10X1.50	10.59	35.0	19.0	13.00	22.23	17.45	20.0	15.88
FMG10/2	FMG10/2LH	M8X1.25	M10X1.50	10.59	35.0	19.0	13.00	12.00	17.45	9.5	15.88
FMG10/4	FMG10/4LH	M12X1.25	M10X1.50	10.59	35.0	19.0	15.88	18.00	17.45	15.5	15.88
FMG12	FMG12LH	M12X1.75	M12X1.75	14.10	49.2	25.4	17.00	28.60	22.20	26.0	19.05
FMG12/1	FMG12/1LH	M12X1.75	M10X1.50	14.10	49.2	25.4	17.00	28.60	22.20	26.0	19.05

FIG SERIES: SPRING RETAINED BALL JOINTS (IMPERIAL)

Part No. Right Hand	Part No. Left Hand	Body Thread	Stud Thread	Ball Dia	L1	L2 Min	Stud A/F	A	B	C Min	D1
FIG250	FIG250LH	1/4 UNF	1/4 UNF	0.306	0.969	0.500	0.375	0.562	0.469	0.370	0.437
FIG312	FIG312LH	5/16 UNF	5/16 UNF	0.344	1.125	0.562	0.437	0.687	0.531	0.580	0.500
FIG312/1	FIG312/1LH	BLANK 0.312	5/16 UNF	0.344	1.125	0.562	0.437	0.687	0.531	0.580	0.500
FIG312/2	FIG312/2LH	5/16 UNF	5/16 UNF	0.344	1.120	0.562	0.437	0.687	0.531	0.580	0.500
FIG375	FIG375LH	3/8 UNF	3/8 UNF	0.416	1.375	0.750	0.500	0.875	0.687	0.770	0.625
FIG375/1	FIG375/1LH	3/8 UNF	3/8 UNF	0.416	1.772	1.181	0.500	0.787	0.866	0.680	0.625
FIG375/2	FIG375/2LH	3/8 BSF	3/8 UNF	0.416	1.375	0.750	0.500	0.787	0.866	0.680	0.625
FIG375/3	FIG375/3LH	3/8 UNF	3/8 UNF	0.416	1.375	0.750	0.500	0.620	0.688	0.520	0.625
FIG375/4	FIG375/4LH	7/16 UNF	3/8 UNF	0.416	1.375	0.750	0.500	0.620	0.688	0.520	0.625
FIG437/1	FIG437/1LH	7/16 UNEF	7/16 UNF	0.416	1.375	0.750	0.625	0.875	0.687	0.770	0.625
FIG500	FIG500LH	1/2 UNF	1/2 UNF	0.555	1.937	1.000	0.625	1.125	0.875	1.000	0.750