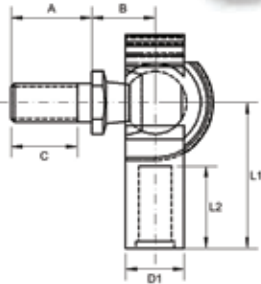




BALL JOINTS



M SERIES

Description:

M-Series is our 2-piece range of light weight nylon bodied lockable ball joints, suitable for light industrial/mechanical load applications requiring smooth action and good wear resistance. M-Series ball joints are also available without the ball stud, allowing for assembly on to a pre-positioned stud. Please refer to compatible ball stud options in our miscellaneous product section. M-Series ball joints have a unique locking clip incorporated into the one piece body, that when closed increases axial pull out and reduces backlash.

Materials:

Body: Nylon PA 6.6 black. Ball stud: Steel 230M07PB zinc plated and clear trivalent passivate.

Features

- Metric thread sizes
- Smooth action
- Can be assembled in situ
- Economical
- Light weight

Possible Applications

- Light industrial equipment
- Light agricultural equip.
- Lawn & garden equipment
- Engine controls

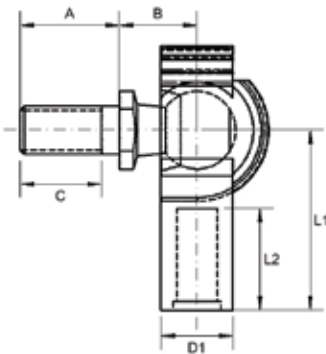
Temperature Range

-40°C to +80°C

Specification

ELV & RoHS compliant

M SERIES: SELF RETAINED BALL JOINTS (METRIC)



Body: PA 6.6

Ball Stud: Steel 230M07Pb, Zinc Plated and Clear Trivalent Passivate

Specification: ELV and RoHS Compliant



Part No. Right Hand	Body Thread	Stud Thread	Ball Dia	L1	L2 Min	Stud A/F	A	B	C Min	D1
M6008	M4X0.70	M4X0.70	6	17	10	5	6.5	8.5	5.5	8.0
M6010	M5X0.80	M5X0.80	8	22	12	7	10.2	9.0	8.6	9.5
M6012	M6X1.00	M6X1.00	10	25	14	8	12.5	11.0	10.0	12.0
M6014	M8X1.25	M8X1.25	13	30	17	11	16.5	13.0	13.5	15.0

