



BALL JOINTS



**P SERIES: PM - PI**

**Description:**

P-Series is our 3-piece range of quick release ball joints, suitable for light industrial/mechanical load applications requiring good wear resistance. Available in both metric and imperial thread sizes. Easily disconnected or re-assembled during installation. P-Series ball joints are also available without the ball stud allowing for assembly on to a pre-positioned stud. Please refer to compatible ball stud options in our miscellaneous product section.

**Material Specifications:**

Body: Steel 230M07PB hardened and zinc plated and clear trivalent passivate  
Ball stud: Steel 230M07PB hardened and zinc plated and clear trivalent passivate  
Clip: CS70 carbon steel, hardened and tempered and geomet finish.

**Features**

Metric & imperial thread  
Easily disconnected or re-assembled during installation  
Can be assembled in situ  
Good wear resistance

Lubricated. Light weight

**Possible Applications**

Light industrial  
Light construction  
Light agricultural  
Lawn & garden  
Automotive

**Temperature Range**

-30°C to +120°C

**Specification**

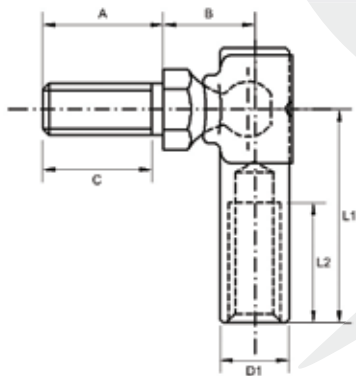
ELV & RoHS compliant

**Interchange table**

Dunlop	Tuthill	THK	Alinabal	SKF	Asahi	Rose
PM (metric)	SC-M	-	-	-	-	-
PI (imperial)	SC	-	-	-	-	-

*Note: Manufacturers part numbers are used for descriptive purposes only and may not be direct equivalent products.*

**PM SERIES: CLIP RETAINED BALL JOINTS (METRIC)**

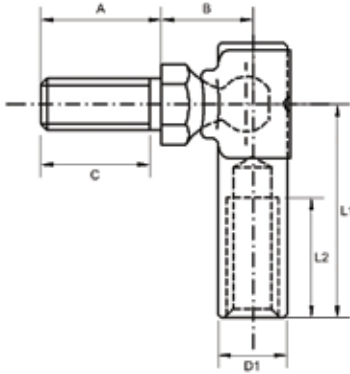


- Body:** Steel 230M07Pb, Zinc Plated and Clear Trivalent Passivate
- Ball Stud:** Steel 230M07Pb, Hardened, Zinc Plated and Clear Trivalent Passivate
- Clip:** CS 70 Carbon Steel
- Specification:** ELV and RoHS Compliant



Part No. Right Hand	Part No. Left Hand	Body Thread	Stud Thread	Ball Dia	L1	L2 Min	Stud A/F	A	B	C Min	D1
PM4	PM4LH	M4X0.70	M4X0.70	4.75	17	10	7	8.0	7.25	6.0	6.0
PM5	PM5LH	M5X0.80	M5X0.80	6.35	22	12	8	11.0	10.63	9.0	8.0
PM5/1	PM5/1LH	M6X1.00	M6X1.00	6.35	22	12	8	14.0	10.63	12.0	8.0
PM6	PM6LH	M6X1.00	M6X1.00	6.35	25	14	8	14.0	10.63	12.0	8.0
PM6/1	PM6/1LH	M6X1.00	M6X1.00	6.35	25	14	8	11.0	10.63	9.0	8.0
PM8	PM8LH	M8X1.25	M8X1.25	8.00	22	12	11	14.0	13.35	12.0	10.0

**PI SERIES: CLIP RETAINED BALL JOINTS (IMPERIAL)**



**Body:** Steel 230M07Pb, Zinc Plated and Clear Trivalent Passivate

**Ball Stud:** Steel 230M07Pb, Hardened, Zinc Plated and Clear Trivalent Passivate

**Clip:** CS 70 Carbon Steel

**Specification:** ELV and RoHS Compliant



Part No. Right Hand	Part No. Left Hand	Body Thread	Stud Thread	Ball Dia	L1	L2 Min	Stud A/F	A	B	C Min	D1
PI187	PI187LH	10-32 UNF	10-32 UNF	0.250	0.875	0.484	0.312	0.437	0.420	0.337	0.312
PI187/1	PI187/1LH	10-32 UNF	1/4 UNF	0.250	0.875	0.484	0.312	0.562	0.420	0.462	0.312
PI187/2	PI187/2LH	10-32 UNF	10-32 UNF	0.250	0.969	0.531	0.312	0.438	0.420	0.375	0.312
PI187/3	PI187/3LH	10-32 UNF	M6 X 1.00	0.250	0.875	0.484	0.312	0.551	0.420	0.489	0.312
PI187/4	PI187/4LH	0.080 dia	N/A	N/A	0.719	0.390	N/A	N/A	N/A	N/A	0.312
PI187/5	PI187/5LH	0.074 dia	N/A	N/A	0.875	0.250	N/A	N/A	N/A	N/A	0.312
PI250	PI250LH	1/4 UNF	1/4 UNF	0.250	0.970	0.531	0.312	0.562	0.420	0.460	0.312
PI250/1	PI250/1LH	1/4 UNF	10-32 UNF	0.250	0.970	0.531	0.312	0.437	0.420	0.330	0.312
PI250/2	PI250/2LH	0.228 dia	1/4 UNF	0.250	0.970	0.500	0.312	0.562	0.420	0.460	0.312
PI250/3	PI250/3LH	10-32 UNF	10-32 UNF	0.250	0.875	0.484	0.312	0.438	0.420	0.390	0.312
PI312	PI312LH	5/16 UNF	5/16 UNF	0.312	0.875	0.484	0.437	0.562	0.553	0.460	0.394

