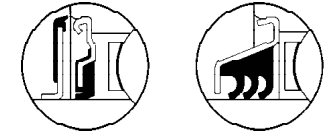
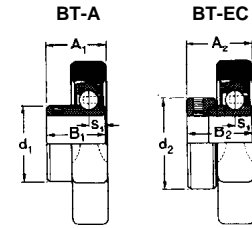
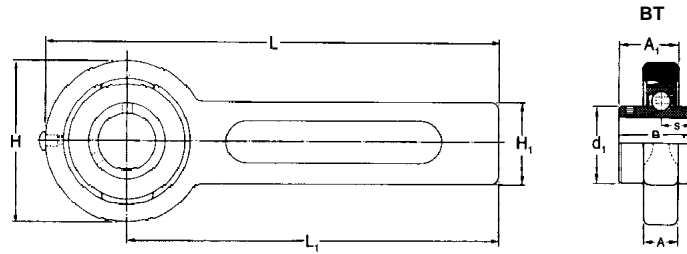


BT SERIES

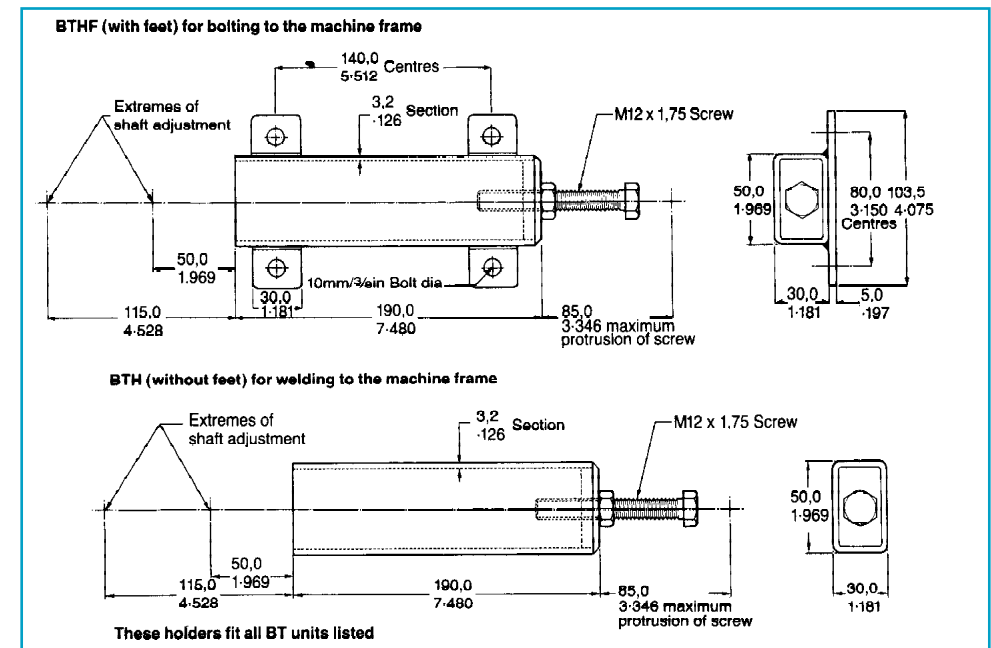


Bearing inserts with flinger seals shown on pages 91 and 92 can be fitted into these housings. The unit reference has the suffix 'FS' e.g. BT35FS.

Triple seal bearing inserts shown on pages 88 and 90 can be fitted into these housings. The unit reference has a prefix 'T', e.g. TBT35.

Shaft diameter		RHP designation			Basic bearing group insert	Casting group	Dimensions					
							H	H ₁	L	L ₁	A	A ₁
mm	inches						mm	inches				
25	7/8 15/16 1	BT25 BT7/8 BT15/16 BT1	BT25A BT1A	BT25EC BT7/8EC BT15/16EC BT1EC	1025	3	78,0 3.071	42,5 1.673	264,0 10.394	225,0 8.858	22,0 0.866	30,57 1.204
30	1 3/16	BT30L			1035	5	98,0	42,5	274,0	225,0	22,0	36,13
35	1 1/4 1 3/8 1 7/16	BT35 BT13/16L BT11/4 BT13/8 BT17/16	BT35A BT11/4A	BT35EC			98,0 3.858	42,5 1.673	274,0 10.787	225,0 8.858	22,0 0.866	36,13 1.422

A ₂	B	B ₁	B ₂	s	s ₁	d ₁	d ₂	ISO load ratings		Rec. max. speed	Mass (approx.)
								dynamic	static		
mm								newtons	newtons	rev/ min	kg
inches								lbf	lbf		lb
34,2	34,11	27,35	30,92	14,32	7,56	34,01	38,10	14000	7880	6250	1,8
1.346	1.343	1.077	1.217	.564	.298	1.339	1.500	3150	1770		4.0
40,2	42,88	34,90	38,88	17,53	9,55	46,69	55,58	25700	15300	4500	2,3
1.583	1.688	1.374	1.531	.690	.376	1.838	2.188	5780	3440		5.0



Please check availability