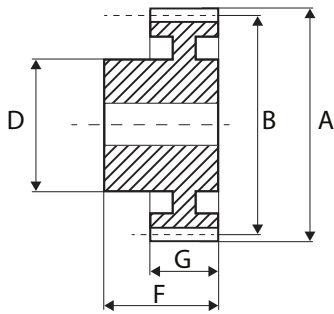


### Metric Spur Gears in Moulded DELRIN® 500, 0.5 MOD, 20° P.A



#### Metric Spur



Moulded DELRIN 500®

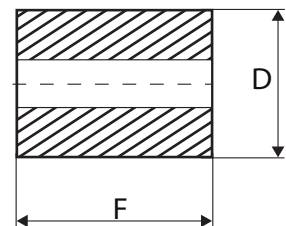
- Intermediate sizes and special gears to drawing (tooling charges may apply)
- Standard tolerances, unless otherwise stated  $\pm 0.25\text{mm}$
- All dimensions in mm
- Moulded DELRIN® 500 to gear quality AGMA 7

Code	No. teeth	Pitch $\varnothing$ B	Bore (-0.02 / -0.04)	Hub/Boss $\varnothing$ D	Outside $\varnothing$ A	O/A width F	Face width G
DS05/12B	12	6	2	4.5	7	7	3
DS05/15B	15	7.5	2	4.5	8.5	7	3
DS05/16B	16	8	3	6	9	7	3
DS05/18B	18	9	3	6	10	7	3
DS05/20B	20	10	4	8	11	7	3
DS05/24B	24	12	4	8	13	7	3
DS05/25B	25	12.5	4	8	13.5	7	3
DS05/28B	28	14	4	8	15	7	3
DS05/30B	30	15	5	10	16	7	3
DS05/32B	32	16	5	10	17	7	3
DS05/35B	35	17.5	5	10	18.5	7	3
DS05/36B	36	18	5	10	19	7	3
DS05/40B	40	20	5	12	21	7	3
DS05/45B	45	22.5	5	12	23.5	7	3
DS05/48B	48	24	5	12	25	7	3
DS05/50B	50	25	5	12	26	7	3
DS05/56B	56	28	6	14	29	8	3
DS05/60B	60	30	6	14	31	8	3
DS05/64B	64	32	6	14	33	8	3
DS05/70B	70	35	6	14	36	8	3
DS05/72B	72	36	6	14	37	8	3
DS05/80B	80	40	6	14	41	8	3

#### Sintered Bronze Bushes type OB

Code	Bore $\varnothing$ (mm)	Outside $\varnothing$ D (mm)	Length F (mm)	Use with
OB357	3	5	7	DS05
OB368	3	6	8	DS05

- Intermediate sizes and special bushes to drawing (tooling charges may apply)
- All dimensions in mm
- Bore tolerance G7
- OD tolerance s7
- Length tolerance js13



Please note: All dimensions subject to change. If a dimension is critical to your application please contact our Sales Department for confirmation. For special or reworked gears please contact our Manufacturing Department for a quotation.