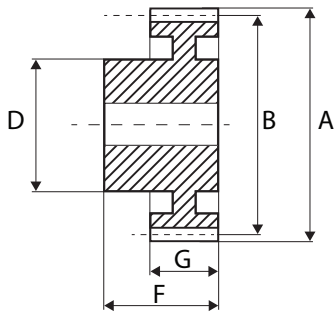


Metric Spur Gears in Moulded DELRIN® 500, 1.0 MOD, 20° P.A



Metric Spur



Moulded DELRIN 500®

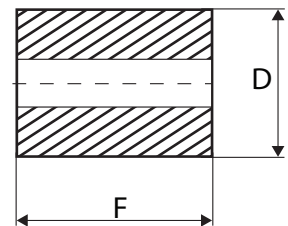
- Intermediate sizes and special gears to drawing (tooling charges may apply)
- Standard tolerances, unless otherwise stated $\pm 0.25\text{mm}$
- All dimensions in mm
- Moulded DELRIN® 500 to gear quality AGMA 7

Code	No. teeth	Pitch \varnothing B	Bore (-0.02 / -0.04)	Hub/Boss \varnothing D	Outside \varnothing A	O/A width F	Face width G
DS10/12B	12	12	4	8	14	12	6
DS10/15B	15	15	4	8	17	12	6
DS10/16B	16	16	5	10	18	12	6
DS10/18B	18	18	5	10	20	12	6
DS10/20B	20	20	5	11.7	22	12	6
DS10/24B	24	24	5	11.7	26	12	6
DS10/25B	25	25	5	11.7	27	12	6
DS10/28B	28	28	5	11.7	30	12	6
DS10/30B	30	30	6	14	32	12	6
DS10/32B	32	32	6	14	34	12	6
DS10/35B	35	35	6	14	37	12	6
DS10/36B	36	36	6	14	38	12	6
DS10/40B	40	40	8	16	42	12	6
DS10/45B	45	45	8	16	47	12	6
DS10/48B	48	48	8	16	50	14	6
DS10/50B	50	50	8	16	52	14	6
DS10/56B	56	56	8	18	58	14	6
DS10/60B	60	60	8	18	62	14	6
DS10/64B	64	64	8	18	66	14	6
DS10/70B	70	70	8	18	72	14	6
DS10/72B	72	72	8	18	74	14	6
DS10/80B	80	80	8	18	82	14	6

Sintered Bronze Bushes type OB

Code	Bore \varnothing (mm)	Outside \varnothing D (mm)	Length F (mm)	Use with
OB4612	4	6	12	DS10
OB5812	5	8	12	DS10
OB5814	5	8	14	DS10

- Intermediate sizes and special bushes to drawing (tooling charges may apply)
- All dimensions in mm
- Bore tolerance G7
- OD tolerance s7
- Length tolerance js13



Please note: All dimensions subject to change. If a dimension is critical to your application please contact our Sales Department for confirmation. For special or reworked gears please contact our Manufacturing Department for a quotation.