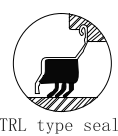
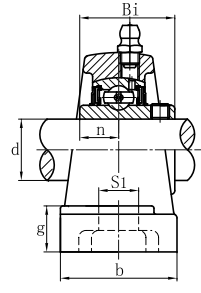
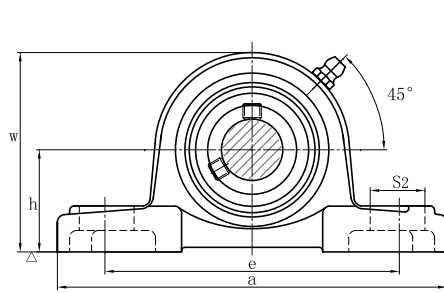


Pillow Blocks

UCP 200
normal-duty



Bearing unit No.	Shaft Dia.		Dimensions(in)or(mm)										Bolt used (mm)	Bearing No.	Housing No.	weight (kg)
	d	h	a	e	b	S2	S1	g	w	Bi	n					
	(in.)	(mm)											(in.)			
UCP 201 201-8	1/2	12	3/16 30.2	5 127	3/4 95	1 1/2 38	3/4 19	1/2 13	19/32 15	2 7/16 62	1.2205 31.0	0.5000 12.7	M10 3/8	UC 201 201-8	P 201	0.63
UCP 202 202-10	5/8	15	3/16 30.2	5 127	3/4 95	1 1/2 38	3/4 19	1/2 13	19/32 15	2 7/16 62	1.2205 31.0	0.5000 12.7	M10 3/8	UC 202 202-10	P 202	0.63
UCP 203 203-11	11/16	17	3/16 30.2	5 127	3/4 95	1 1/2 38	3/4 19	1/2 13	19/32 15	2 7/16 62	1.2205 31.0	0.5000 12.7	M10 3/8	UC 203 203-11	P 203	0.63
UCP 204-12 204	3/4	20	5/16 33.3	5 127	3/4 95	1 1/2 38	3/4 19	1/2 13	19/32 15	2 9/16 65	1.2205 31.0	0.5000 12.7	M10 3/8	UC 204-12 204	P 204	0.65
UCP 205-14 205-15 205	7/8 15/16	25	7/16 36.5	5 1/2 140	4 1/8 105	1 1/2 38	5/8 16	1/2 13	5/8 16	2 3/4 70	1.3386 34	0.5630 14.3	M10 3/8	UC 205-14 205-15 205	P 205	0.79
UCP 206-18 206	1 1/8	30	11/16 42.9	6 1/2 165	4 9/64 121	1 7/8 48	53/64 21	21/32 17	45/64 18	3 1/4 83	1.5000 38.1	0.6260 15.9	M14 1/2	UC 206-18 206	P 206	1.3
UCP 207-20 207-21 207-22 207	1 3/16 1 1/4 1 5/16 1 3/8	35	7/8 6 3/64	37/64 167	5 127	1 7/8 48	53/64 21	21/32 17	3/4 19	3 5/64 94	1.6890 42.9	0.6890 17.5	M14 1/2	UC 207-20 207-21 207-22 207	P 207	1.60
UCP 208-24 208-25 208	1 1/2 1 9/16	40	15/16 49.2	7 1/4 184	5 25/64 137	2 1/8 54	63/64 25	21/32 17	3/4 19	3 15/16 100	1.9370 49.2	0.7480 19.0	M14 1/2	UC 208-24 208-25 208	P 208	2.00
UCP 209-26 209-27 209-28 209	1 5/8 1 11/16 1 3/4	45	1 54.0	15 190	5 3/4 146	2 1/8 54	55/64 22	21/32 17	25/32 20	4 1/4 108	1.9370 49.2	0.7480 19.0	M14 1/2	UC 209-26 209-27 209-28 209	P 209	2.20
UCP 210-30 210-31 210	1 7/8 1 15/16	50	2 1/4 57.2	8 1/8 206	6 1/4 159	2 3/8 60	63/64 25	25/32 20	55/64 22	4 1/2 114	2.0315 51.6	0.7480 19.0	M16 5/8	UC 210-30 210-31 210	P 210	2.80
UCP 211-32 211-34 211	2 2 1/8	55	2 1/2 63.5	5 219	4 7/64 171	2 3/8 60	63/64 25	25/32 20	55/64 22	4 31/32 126	2.1890 55.6	0.8740 22.2	M16 5/8	UC 211-32 211-34 211	P 211	3.40
UCP 212-36 212	2 1/4	60	2 3/4 69.8	9 1/2 241	7 1/4 184	2 3/4 70	63/64 25	25/32 20	63/64 25	5 7/16 138	2.5630 65.1	1.0000 25.4	M16 5/8	UC 212-36 212	P 212	4.80
UCP 213-40 213	2 1/2	65	3 76.2	10 7/16 265	8 203	2 3/4 70	9/64 29	63/64 25	1/16 27	29/32 150	2.5630 65.1	1.0000 25.4	M20 3/4	UC 213-40 213	P 213	5.70
UCP 214-44 214	2 3/4	70	3 1/8 79.4	15 7/32 10 3/2 266	9 9/32 8 3/2 210	2 7/8 72	63/64 25	1/16 27	9/64 156	2.9370 74.6	1.1890 30.2		M20 3/4	UC 214-44 214	P 214	7.00
UCP 215 215-47 215-48	2 15/16 3	75	3 1/4 82.6	13 1/16 10 1/16 275	17 1/32 8 3/2 217	2 29/32 74	1 7/32 31	63/64 25	3/32 28	13/32 163	3.0630 77.8	1.3110 33.3	M20 3/4	UC 215 215-47 215-48	P 215	7.60
UCP 216 216-50	3 1/8	80	3 1/2 88.9	11 1/2 292	9 8/8 232	3 1/16 78	1 7/32 31	63/64 25	3/16 30	7/8 175	3.2520 82.6	1.3110 33.3	M20 3/4	UC 216 216-50	P 216	9.00
UCP 217-52 217	3 1/4	85	3 3/4 95.2	12 3/2 310	23 3/2 9 3/2 247	3 9/32 83	1 7/32 31	63/64 25	1 1/4 32	7/8 187	3.3740 85.7	1.3425 34.1	M20 3/4	UC 217-52 217	P 217	11.50
UCP 218-56 218	3 1/2	90	4 101.6	12 7/8 327	10 5/16 262	3 15/32 88	1 19/64 33	1 1/16 27	1 1/32 34	7/8 200	3.7795 96.0	1.5630 39.7	M22 7/8	UC 218-56 218	P 218	14.30