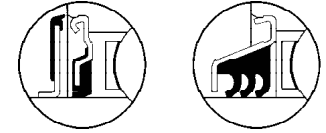
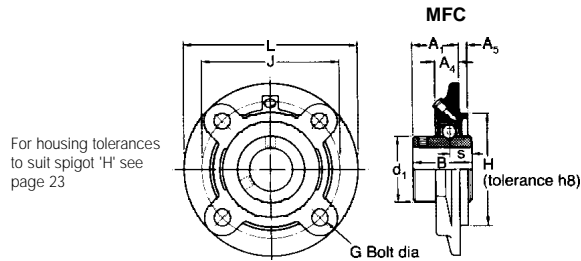


MFC SERIES



Bearing inserts with flinger seals shown on pages 91 and 92 can be fitted into these housings. The unit reference has the suffix 'FS' e.g. MFC30FS.

Triple seal bearing inserts shown on pages 88 to 90 can be fitted into these housings. The unit reference has a prefix 'T', e.g. TMFC30.

Shaft diameter		RHP designation	Basic bearing insert	Casting group	Dimensions							B
mm	inches				L	H	J	G	A1	A4	A5	
25	1 1 1/4	MFC25 MFC1 MFC1 1/4R	1030	1	111,1 4-374	76,20 3-000	92,08 3-625	8 5/16	33,32 1-312	21,0 -827	6,4 -252	38,10 1-500
30	1 3/16 1 1/4	MFC30 MFC1 3/16 MFC1 1/4	1035	2	127,0 5-000	85,72 3-375	104,78 4-125	10 3/8	33,32 1-312	19,0 -748	6,4 -252	42,88 1-688
35 40	1 3/8 1 7/16 1 1/2	MFC35 MFC40 MFC1 3/8 MFC1 7/16 MFC1 1/2	1040	3	133,4 5-252	92,07 3-625	111,12 4-375	10 3/8	38,10 1-500	19,0 -748	6,4 -252	49,23 1-938
45	1 11/16 1 3/4 2	MFC45 MFC1 11/16 MFC1 3/4 MFC2R	1050	4	155,6 6-126	107,95 4-250	130,18 5-125	10 7/16	39,67 1-562	19,0 -748	6,4 -252	51,59 2-031
50	1 7/8 1 15/16 2	MFC50 MFC1 7/8 MFC1 15/16 MFC2	1055	5	161,9 6-374	114,30 4-500	136,52 5-375	10 7/16	36,97 1-562	19,0 -748	6,4 -252	55,55 2-187
55	2 3/16 2 1/4	MFC55 MFC2 3/16 MFC2 1/4	1060	6	181,0 7-126	127,00 5-000	152,40 6-000	12 1/2	42,85 1-687	15,9 -626	9,5 -374	65,07 2-562
60 65	2 7/16 2 1/2	MFC60 MFC65R MFC2 7/16 MFC2 1/2	1070	7	193,7 7-626	139,70 5-500	165,10 6-500	12 1/2	46,02 1-812	15,9 -626	12,7 -500	74,63 2-938
65 70	2 11/16 2 3/4	MFC65 MFC70 MFC2 11/16 MFC2 3/4	1075	8	222,2 8-748	161,92 6-375	190,50 7-500	16 5/8	50,80 2-000	21,0 -827	12,7 -500	77,77 3-062
75 80	2 15/16 3 3 1/4	MFC75 MFC80 MFC2 15/16 MFC3 MFC3 1/4	1080	9	222,2 8-748	161,92 6-375	190,50 7-500	16 5/8	50,80 2-000	16,7 -657	12,7 -500	82,55 3-250
85 90	3 7/16 3 1/2	MFC85 MFC90 MFC3 7/16 MFC3 1/2	1090	10	260,4 10-252	187,32 7-375	219,08 8-625	20 3/4	67,46 2-656	29,4 1-157	12,7 -500	96,04 3-781
95 100	3 15/16 4	MFC95 MFC100 MFC3 15/16 MFC4	3095	11	298,4 11-748	228,60 9-000	260,35 10-250	20 3/4	88,90 3-500	46,0 1-811	12,7 -500	117,48 4-625

s	d1	ISO load ratings		Rec. max. speed	Mass (approx.)
		dynamic Cr	static Cor		
mm	inches	newtons	newtons	rev/ min	kg
		lbf	lbf		lb

15,93 -627	40,00 1-575	19500 4380	11300 2540	5300	1,4 3-0
17,53 -690	46,69 1-838	25700 5780	15300 3440	4500	1,5 3-4
19,10 -752	52,70 2-075	29100 6540	17900 4020	4000	1,9 4-2
19,10 -752	62,20 2-449	35000 7870	23200 5220	3400	2,7 6-0
22,28 -877	68,81 2-709	43500 9780	29200 6560	3100	3,0 6-6
25,45 1-002	75,34 2-966	52500 11800	35900 8070	2800	3,4 7-6
30,23 1-190	87,00 3-425	62000 13940	44000 9890	2450	4,5 10-0
33,37 1-314	92,00 3-622	66000 14840	49300 11080	2300	5,9 13-0
33,37 1-314	98,50 3-878	72500 16300	53000 11910	2150	5,4 12-0
39,73 1-564	111,66 4-396	96000 21580	71500 16070	1900	9,8 21-5
49,27 1-940	130,43 5-135	143000 32150	110000 24730	1600	17,7 39-0

Please check availability