

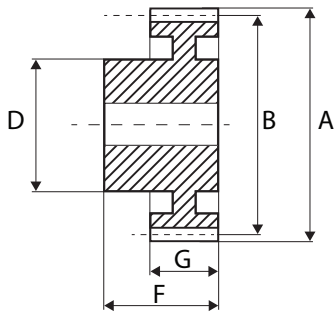
# GEARS & RACKS

## Metric Spur Gears

### Metric Spur Gears in 30% Glass-Filled Nylon 6, 1.5 MOD, 20° P.A



Metric Spur



30% Glass Filled Nylon 6

- Intermediate sizes and special gears to drawing (tooling charges may apply)
- Bore unmachined typically 0.5-1mm undersize
- Standard tolerances, unless otherwise stated  $\pm 0.25\text{mm}$
- Max recommended working temperature 130°C
- All dimensions in mm
- Moulded Nylon 6 (PA6), 30% Glass filled

Code	No. teeth	Pitch $\varnothing$ B	Pre-bore (rough)	Hub/Boss $\varnothing$ D	Outside $\varnothing$ A	O/A width F	Face width G
PS15/12B	12	18	5	14	21	30	17
PS15/13B	13	19.5	5	16	22.5	30	17
PS15/14B	14	21	5	16	24	30	17
PS15/15B	15	22.5	5	18	25.5	30	17
PS15/16B	16	24	5	18	27	30	17
PS15/17B	17	25.5	5	18	28.5	30	17
PS15/18B	18	27	5	18	30	30	17
PS15/19B	19	28.5	8	25	31.5	30	17
PS15/20B	20	30	8	25	33	30	17
PS15/21B	21	31.5	8	25	34.5	30	17
PS15/22B	22	33	8	28	36	30	17
PS15/23B	23	34.5	8	28	37.5	30	17
PS15/24B	24	36	8	28	39	30	17
PS15/25B	25	37.5	8	30	40.5	30	17
PS15/26B	26	39	8	30	42	30	17
PS15/27B	27	40.5	8	30	43.5	30	17
PS15/28B	28	42	8	30	45	30	17
PS15/30B	30	45	12	35	48	30	17
PS15/32B	32	48	12	35	51	30	17
PS15/35B	35	52.5	12	35	55.5	30	17
PS15/36B	36	54	16	35	57	30	17
PS15/38B	38	57	16	35	60	30	17
PS15/40B	40	60	16	40	63	30	17
PS15/42B	42	63	16	45	66	30	17
PS15/44B	44	66	16	45	69	30	17
PS15/45B	45	67.5	16	45	70.5	30	17
PS15/46B	46	69	16	45	72	30	17
PS15/48B	48	72	16	45	75	30	17
PS15/50B	50	75	16	45	78	30	17
PS15/52B	52	78	20	50	81	30	17
PS15/54B	54	81	20	50	84	30	17
PS15/55B	55	82.5	20	50	85.5	30	17
PS15/60B	60	90	20	60	93	30	17
PS15/65B	65	97.5	20	60	100.5	30	17
PS15/70B	70	105	20	60	108	30	17
PS15/75B	75	112.5	20	60	115.5	30	17
PS15/104B	104	156	25	60	159	30	17

Please note: It is recommended that when the bores in "PS" Moulded Spur Gears are machined they are machined to the bore size stated or very close to the catalogue size. Boring these gears to a much larger bore diameter could increase the possibility of discovering small voids or cavities in this area. All dimensions subject to change. If a dimension is critical to your application please contact our Sales Department for confirmation. For special or reworked gears please contact our Manufacturing Department for a quotation.