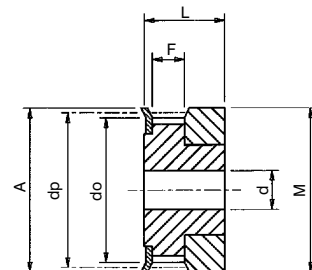


Pulleys for Metric Polyurethane T2.5 and T5 Belts

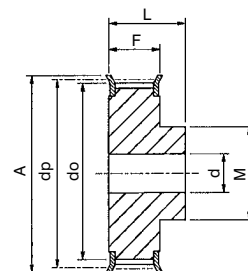
| Catalogue No. | No. Teeth Z | Pulley Type | Pitch Circle Diameter dp | Min. Bore d | Max Bore d | Outside Diameter do | Flange Diameter A | Pulley Width F | Bore Length L | Hub Diameter M | Approx. Weight kg |
|--|-------------|-------------|--------------------------|-------------|------------|---------------------|-------------------|----------------|---------------|----------------|-------------------|
| 2.5mm Pitch Pulleys for 6mm Wide Belt Ref. 6T2.5- | | | | | | | | | | | |
| 6 T2.5-12 | 12 | 0F | 9.55 | 4 | 4.5 | 9.0 | 13.0 | 9 | 16 | 13 | .003 |
| 6 T2.5-14 | 14 | 0F | 11.14 | 4 | 6 | 10.6 | 15.0 | 9 | 16 | 15 | .004 |
| 6 T2.5-15 | 15 | 0F | 11.94 | 4 | 6 | 11.4 | 15.0 | 9 | 16 | 15 | .005 |
| 6 T2.5-16 | 16 | 0F | 12.73 | 4 | 7 | 12.2 | 16.0 | 9 | 16 | 16 | .005 |
| 6 T2.5-18 | 18 | 1F | 14.32 | 4 | 6.5 | 13.8 | 17.5 | 10 | 16 | 10 | .006 |
| 6 T2.5-19 | 19 | 1F | 15.12 | 4 | 6.5 | 14.6 | 18.0 | 10 | 16 | 10 | .007 |
| 6 T2.5-20 | 20 | 1F | 15.92 | 4 | 7 | 15.4 | 20.0 | 10 | 16 | 11 | .008 |
| 6 T2.5-22 | 22 | 1F | 17.51 | 4 | 7 | 17.0 | 23.0 | 10 | 16 | 11 | .010 |
| 6 T2.5-24 | 24 | 1F | 19.10 | 4 | 8 | 18.5 | 23.0 | 10 | 16 | 12 | .012 |
| 6 T2.5-25 | 25 | 1F | 19.89 | 4 | 8.5 | 19.3 | 23.0 | 10 | 16 | 13 | .013 |
| 6 T2.5-26 | 26 | 1F | 20.69 | 4 | 9 | 20.1 | 25.0 | 10 | 16 | 14 | .014 |
| 6 T2.5-28 | 28 | 1F | 22.28 | 4 | 9 | 21.7 | 25.0 | 10 | 16 | 14 | .016 |
| 6 T2.5-30 | 30 | 1F | 23.87 | 6 | 10 | 23.3 | 28.0 | 10 | 16 | 16 | .018 |
| 6 T2.5-32 | 32 | 1F | 25.46 | 6 | 10 | 24.9 | 32.0 | 10 | 16 | 16 | .020 |
| 6 T2.5-36 | 36 | 1F | 28.65 | 6 | 13 | 28.1 | 36.0 | 10 | 16 | 20 | .026 |
| 6 T2.5-40 | 40 | 1F | 31.83 | 6 | 14 | 31.3 | 38.0 | 10 | 16 | 22 | .032 |
| 6 T2.5-44 | 44 | 1F | 35.01 | 6 | 15 | 34.5 | 42.0 | 10 | 16 | 24 | .040 |
| 6 T2.5-48 | 48 | 1 | 38.20 | 6 | 17 | 37.7 | - | 10 | 16 | 26 | .048 |
| 6 T2.5-60 | 60 | 1 | 47.75 | 8 | 22 | 47.2 | - | 10 | 16 | 34 | .073 |

Pulley Types

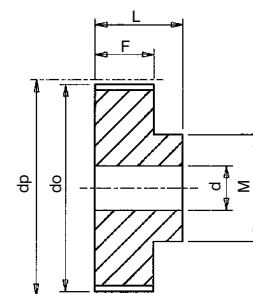
The Pulley types referred to in tables are as drawings below. Suffix 'F' indicates pulley has flanges. Std. Pulleys can be reworked to customer's bore and keywaying requirement.



Type 0F



Type 1F



Type 1

All pulleys machined from aluminium for low weight and inertia, and fitted as indicated with steel flanges. All dimensions in mm