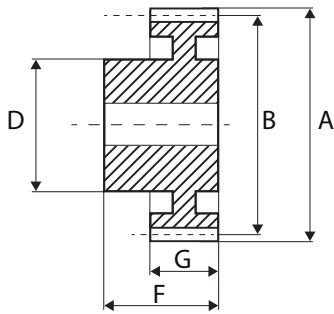


Metric Spur Gears in Moulded HOSTAFORM[®], 2.0 MOD, 20° P.A



Metric Spur



Moulded HOSTAFORM[®]

- Intermediate sizes and special gears to drawing (tooling charges may apply)
- Standard tolerances, unless otherwise stated $\pm 0.25\text{mm}$
- All dimensions in mm
- Moulded HOSTAFORM[®] C to DIN 3962/63/67 Grade 12

Code	No. teeth	Pitch \varnothing B	Bore (H9)	Hub/Boss \varnothing D	Outside \varnothing A	O/A width F	Face width G
WPS20/12B	12	24	8	18.5	28	27	15
WPS20/13B	13	26	8	18.5	30	27	15
WPS20/14B	14	28	8	18.5	32	27	15
WPS20/15B	15	30	8	18.5	34	27	15
WPS20/16B	16	32	8	17.5	36	27	15
WPS20/17B	17	34	8	17.5	38	27	15
WPS20/18B	18	36	8	17.5	40	27	15
WPS20/19B	19	38	8	17.5	42	27	15
WPS20/20B	20	40	10	20	44	27	15
WPS20/21B	21	42	10	20	46	27	15
WPS20/22B	22	44	10	20	48	27	15
WPS20/23B	23	46	10	20	50	27	15
WPS20/24B	24	48	10	24	52	27	15
WPS20/25B	25	50	10	24	54	27	15
WPS20/26B	26	52	10	24	56	27	15
WPS20/27B	27	54	10	24	58	27	15
WPS20/28B	28	56	10	24	60	27	15
WPS20/30B	30	60	10	24	64	27	15
WPS20/32B	32	64	10	26	68	27	15
WPS20/35B	35	70	12	26	74	27	15
WPS20/36B	36	72	12	26	76	27	15
WPS20/38B	38	76	12	26	80	27	15
WPS20/40B	40	80	12	26	84	27	15
WPS20/42B	42	84	12	26	88	27	15
WPS20/45B	45	90	14	30	94	27	15
WPS20/48B	48	96	14	30	100	27	15
WPS20/50B	50	100	14	30	104	27	15
WPS20/55B	55	110	14	30	114	27	15
WPS20/60B	60	120	14	30	124	27	15
WPS20/70B	70	140	14	30	144	27	15

Please note: All dimensions subject to change. If a dimension is critical to your application please contact our Sales Department for confirmation. For special or reworked gears please contact our Manufacturing Department for a quotation.