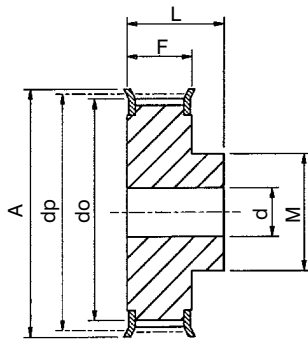


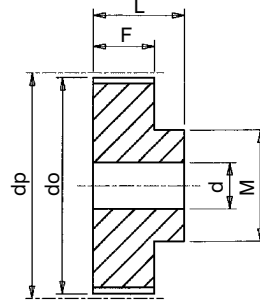
Classical Timing Belt Pulleys

Standard Pulleys for XL (1/5" pitch) Belts

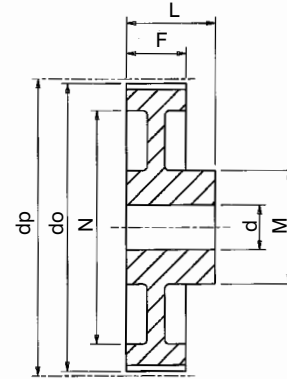
Pulley Types available in both steel and aluminium. For steel add 'C' to part number, for aluminium add 'L'.



Type 1F



Type 1



Type 2

Catalogue No.	No. Teeth Z	Pulley Type	Pitch Circle Dia. dp	Min. Bore d	Max. Bore d	Outside Diameter do	Flange Diameter A	Pulley Width F	Bore Length L	Hub Diameter M	Rim Diameter N	Approx Weight kg
1/5" Pitch Pulleys for 3/8" Wide Belts. Ref. XL037												
10XL037	10	1F	16.17	4.0	6	15.7	23	14.3	20.0	9.5	-	0.02
11XL037	11	1F	17.79	4.0	6	17.3	23	14.3	20.0	9.5	-	0.02
12XL037	12	1F	19.40	4.0	7	18.9	25	14.3	20.0	10.0	-	0.03
13XL037	13	1F	21.02	4.0	7	20.5	28	14.3	20.0	10.0	-	0.04
14XL037	14	1F	22.64	4.0	10	22.1	28	14.3	20.0	15.0	-	0.05
15XL037	15	1F	24.26	6.0	10	23.8	28	14.3	20.0	15.0	-	0.05
16XL037	16	1F	25.87	6.0	10	25.4	32	14.3	20.0	16.0	-	0.06
17XL037	17	1F	27.49	6.0	13	27.0	35	14.3	20.0	20.0	-	0.07
18XL037	18	1F	29.11	6.0	13	28.6	35	14.3	20.0	20.0	-	0.08
19XL037	19	1F	30.72	6.0	13	30.2	38	14.3	22.0	20.0	-	0.09
20XL037	20	1F	32.34	6.0	15	31.8	38	14.3	22.0	23.5	-	0.11
21XL037	21	1F	33.96	6.0	15	33.5	38	14.3	22.0	23.5	-	0.12
22XL037	22	1F	35.57	6.0	16	35.1	41	14.3	22.0	25.0	-	0.13
24XL037	24	1F	38.81	6.0	20	38.3	44	14.3	22.0	30.0	-	0.15
26XL037	26	1F	42.04	8.0	20	41.5	48	14.3	22.0	30.0	-	0.19
27XL037	27	1F	43.66	8.0	20	43.2	48	14.3	22.0	30.0	-	0.20
28XL037	28	1F	45.28	8.0	22	44.8	51	14.3	22.0	34.0	-	0.22
30XL037	30	1F	48.51	8.0	25	48.0	54	14.3	22.0	38.0	-	0.24
32XL037	32	1F	51.74	8.0	25	51.2	57	14.3	25.0	38.0	-	0.12
34XL037	34	1	54.98	8.0	29	54.5	-	14.3	25.0	45.0	-	0.12
35XL037	35	1	56.60	8.0	29	56.1	-	14.3	25.0	45.0	-	0.13
36XL037	36	1	58.21	8.0	29	57.7	-	14.3	25.0	45.0	-	0.14
38XL037	38	1	61.45	8.0	29	61.0	-	14.3	25.0	45.0	-	0.16
40XL037	40	1	64.68	8.0	29	64.2	-	14.3	25.0	45.0	-	0.17
42XL037	42	1	67.91	8.0	29	67.4	-	14.3	25.0	45.0	-	0.18
44XL037	44	1	71.15	8.0	29	70.6	-	14.3	25.0	45.0	-	0.19
48XL037	48	2	77.62	10.0	29	77.1	-	14.3	25.0	45.0	61	0.21
60XL037	60	2	97.02	10.0	29	96.5	-	14.3	25.0	45.0	80	0.25
72XL037	72	2	116.43	10.0	29	115.9	-	14.3	25.0	45.0	100	0.30

All dimensions in mm.